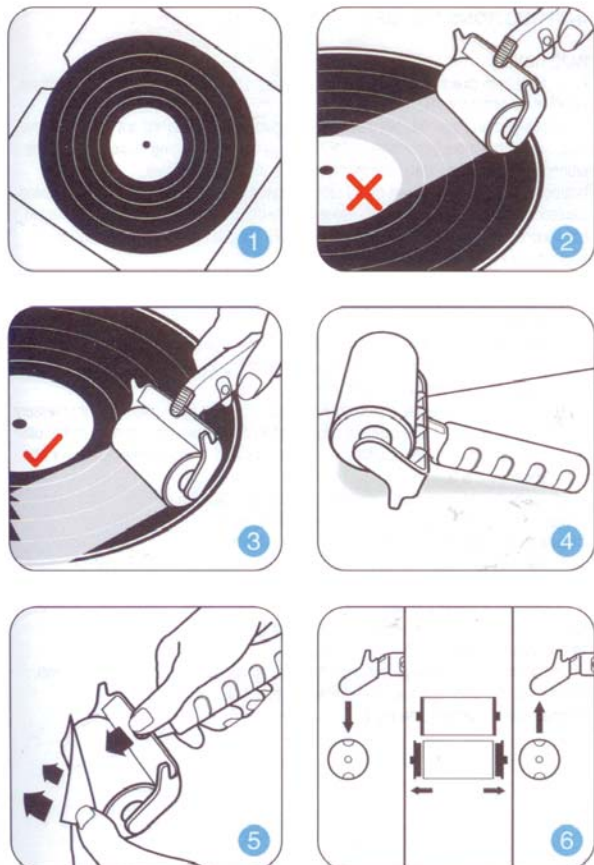


MILTY Pixall MkIII

INSTRUCTIONS FOR USE



IMPORTANT :

Keep away from direct sunlight and excessive heat. Store under normal room conditions.

Pixall is no ordinary cleaner

Its unique cleaning tape has been specially formulated and designed not only to remove surface dust but more importantly to LIFT and dispose of damaging microdust particles embedded and held by static energy deep inside the record grooves. Independent Tests have shown that a record treated with Pixall results visually in leaving the record in PRISTINE CONDITION whilst audibly there is a remarkable improvement in both sound quality and frequency response with a notable reduction in extraneous background noises.

Pixall is simple, practical and most effective in use. To obtain the best results, please follow the instructions carefully.

TO clean a record

- Record should be placed on a clean flat surface, ie a rubber mat or the inner sleeve of the record. It is not recommended to clean the record on the turntable. **See Fig 1.**
- Remove protective vinyl cover from roller.
- Place roller surface gently on record. Roll slowly and with application of slight pressure over entire record surface carefully avoiding the centre label. (The efficacy of the roller is such that if brought into contact with the centre label it could either remove or tear it.) **See Figs 2 & 3.**
- When pixall not in use, turn over and rest as shown. **See Fig 4.**
- Replace protective vinyl cover after each session of use.

TO renew the cleaning surface

Each roller has 6ft (1.85metres) of special record cleaning tape. When used surface becomes dirty and loses its effectiveness peel back tape to expose a new layer.

Push down knife blade and tear off used section. A clean new surface is now ready for immediate use.

See Fig 5.

TO reload with a new refill

When the roll of cleaning tape has been fully used push out roller assembly as shown.

Remove the two end caps and reassemble into new refill.

Replace roller assembly. **See Fig 6.**

