

Fixed Frame Wall Screen

FEATURES

- Easy to assemble frame
- Extruded 2 1/2" black velvet finished frame
- Standard VTS™ (Vutec Tensioning System)
- Installer friendly
- Custom sizes available
- Optional black liner for SoundScreen available
- Available in 16:10 format
- Optional tubular stand legs



Vu-Easy is Vutec's most popular, high quality fixed frame wall screen. It's permanently-tensioned, easy-to-install and is available in a choice of seven screen surfaces to suit any viewing environment. Vu-Easy's standard features include a black velvet beveled frame, the VTS™ system for easy installation and is available in 16:9, 2.35:1 and 4:3 formats to complement any size viewing room.

Vu-Easy is also available in Vutec's award-winning acoustically transparent SoundScreen, allowing for speaker placement behind the screen for an optimal sound experience.

DIAGONAL SIZES

Standard (4:3) : 72" - 180"

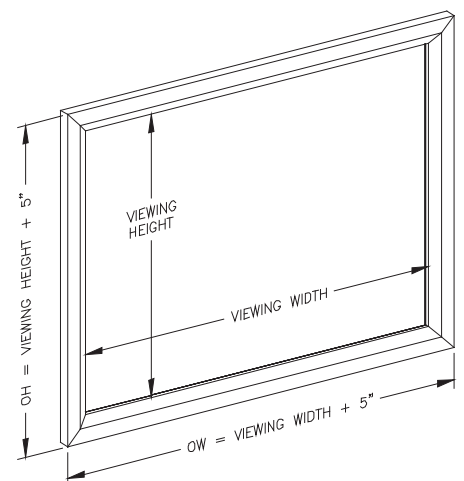
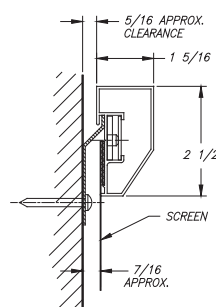
HDTV (16:9) : 92" - 159"

Widescreen (2.35:1) : 115" - 189"

SURFACES

- BriteWhite
- BriteWhite Opaque
- PearlBrite
- Rear-Vu
- GreyDove
- SoundScreen
- GreyDove SoundScreen

TECHNICAL



INTENNIA

บริษัท อินเทนเนีย จำกัด
 384 บางลาดพร้าว 94 เขตวังทองหลางกรุงเทพฯ
 โทร. 02-934-6997 แฟกซ์. 02-934-6449
 อีเมล : info@intennia.com
 www.intennia.com